

## Remote Reboot Plug

### DESCRIPTION

Remote Reboot Plug by Vendon is designed for a remote hard reboot of the machine by cycling its main power supply. It is controlled by vBox2 via cable.

### REMOTE REBOOT PLUG STANDART SET

- 1 pcs Reboot
- 1 pcs cable (4 or 6 meters)
- 5 pcs self-adhesive wire clips

### REMOTE REBOOT PLUG FUNCTIONALITY

Remote Reboot Plug is designed for vBox2 additional functionality – for a remote hard reboot of the machine.

Remote Reboot Plug is plugged into a wall socket and connected to vBox2 with the provided cable. The machine to be controlled is plugged into Remote Reboot Plug.

Once Remote Reboot Plug is connected to vBox2 and all settings configured for a remote reboot in Vendon Cloud, the machine can be remotely rebooted through vBox2 commands.

### INSTALLATION

1. Ensure the machine and vBox2 are switched-off before installation
2. Plug the DC barrel in the Remote Reboot Plug
3. Plug the cable connector in the vBox2 C2 plug
4. Plug the machine power cable onto the reboot device
5. Plug the Remote Reboot Plug into the wall socket

The Remote Reboot Plug is Normally Closed. The default state of Remote Reboot Plug is to supply power to the machine.

### TECHNICAL DATA

Do not insert Remote Reboot Plug into another adaptor.

Ingress Protection:

- IP Code IP20
- Class I appliance

External environment impact:

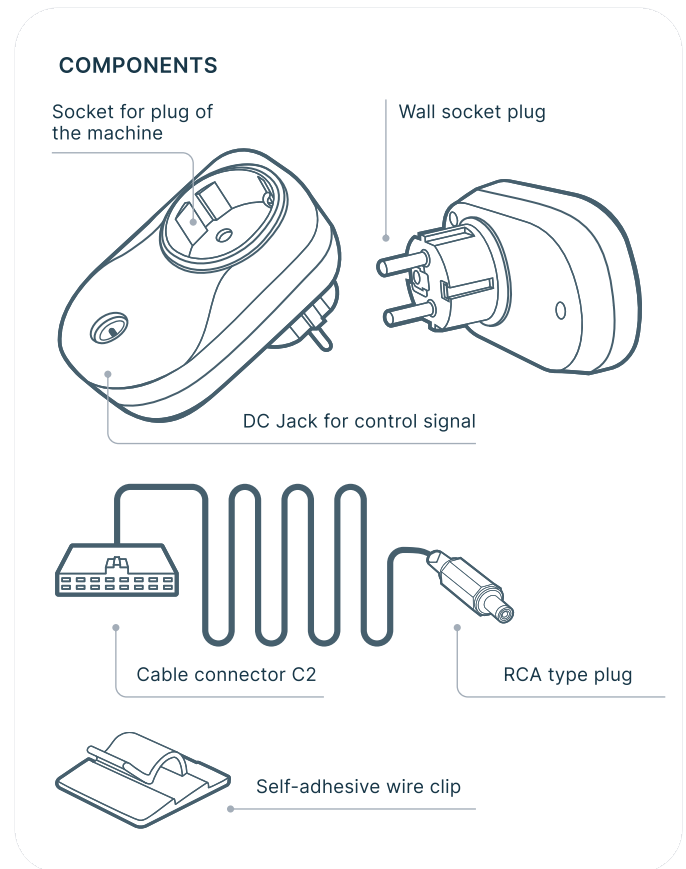
- Temperature (during exploitation) from 0°C to 55°C
- Temperature (during storage) from -20°C to +60°C
- Relative humidity (during exploitation) from 5% to 95% (noncondensing)
- Relative humidity (during storage) less than 95% (noncondensing)

Internal Environmental requirements:

- Micro-environment pollution degree 1
- Macro-environment pollution degree 1
- Operating temperature from 0°C to 55°C
- Relative humidity from 5% to 95% (noncondensing)

Control signal:

- Voltage: 0V
- Current: 0mA
- Voltage: 5V DC (any polarity)
- Current: 75mA



Electrical load:

- 16 RA 230V AC  $\mu$
- Withstanding voltage from mains to DC Jack: 2.5kV
- Overvoltage category II
- Duty type - Continuous duty
- Type and/or connection of switch - Single Pole, Single load (single pole disconnection)
- Configuration of switching device - Mechanical switch with electronics. Does not impact the safety of the switch
- Number of operating cycles: 50 000 (for relay)
- Micro disconnection

Insulation materials:

- Tracking CTI = 175
- Glow wire temperature 650°C
- Type 1 coating

Dimensions (without cable):

- 110mm length
- 62mm width
- 73mm height

Other information:

- Forced cooling not required
- Device does not contain a built-in protection or fuse
- Speed of contact closure and opening is dependent on the actuator speed